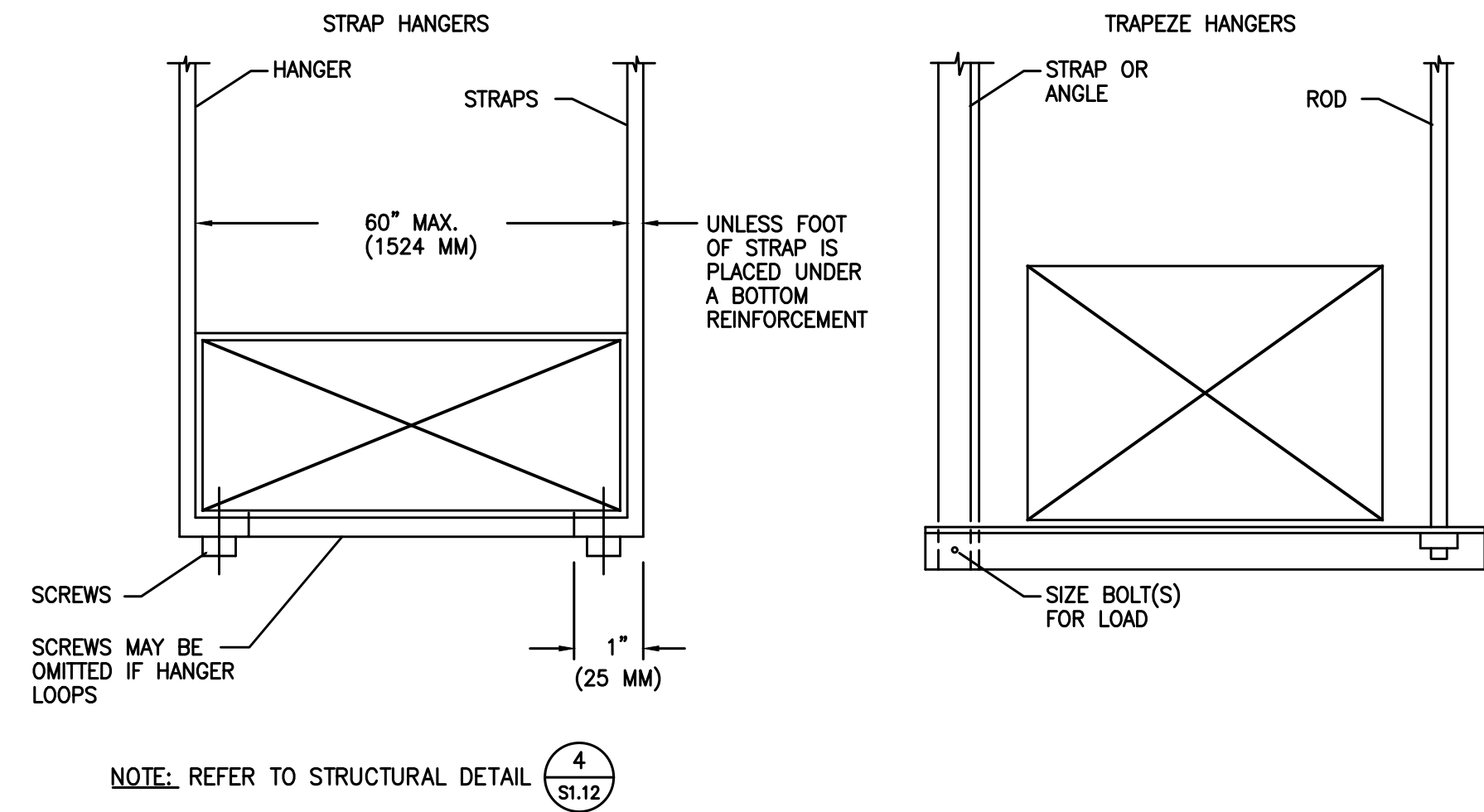
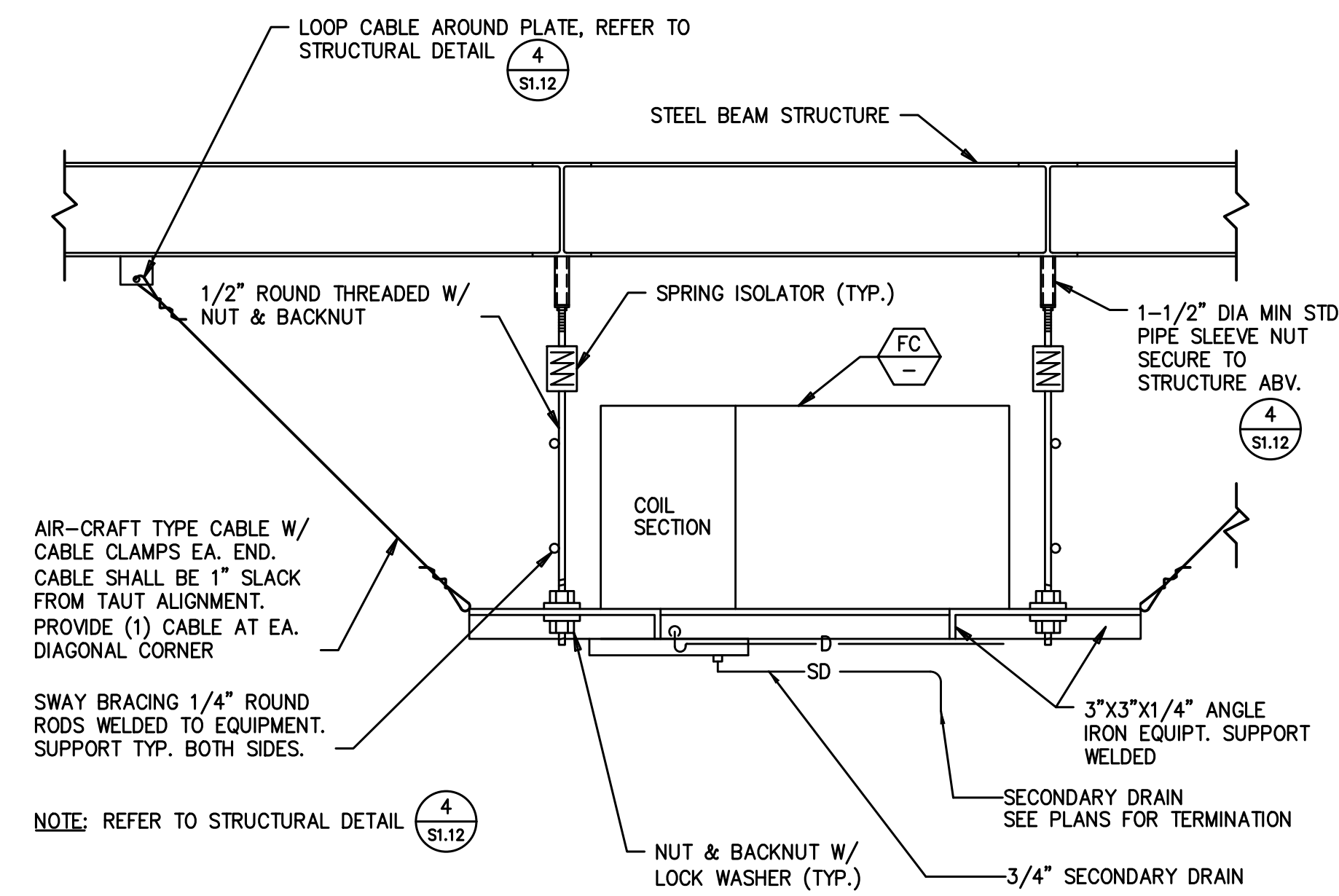


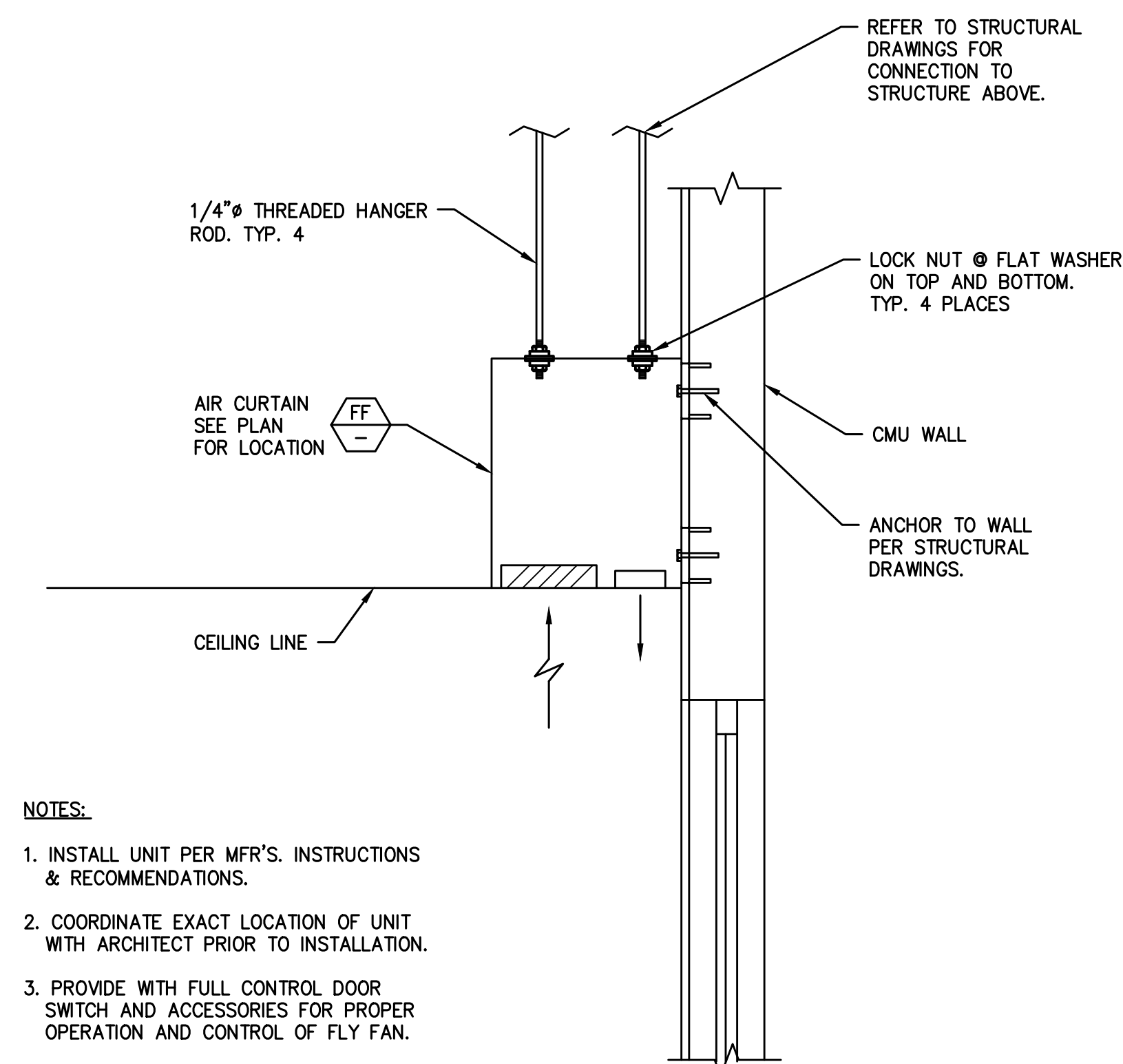
12 HEAT PUMP MOUNTING DETAIL
M11.01 NOT TO SCALE



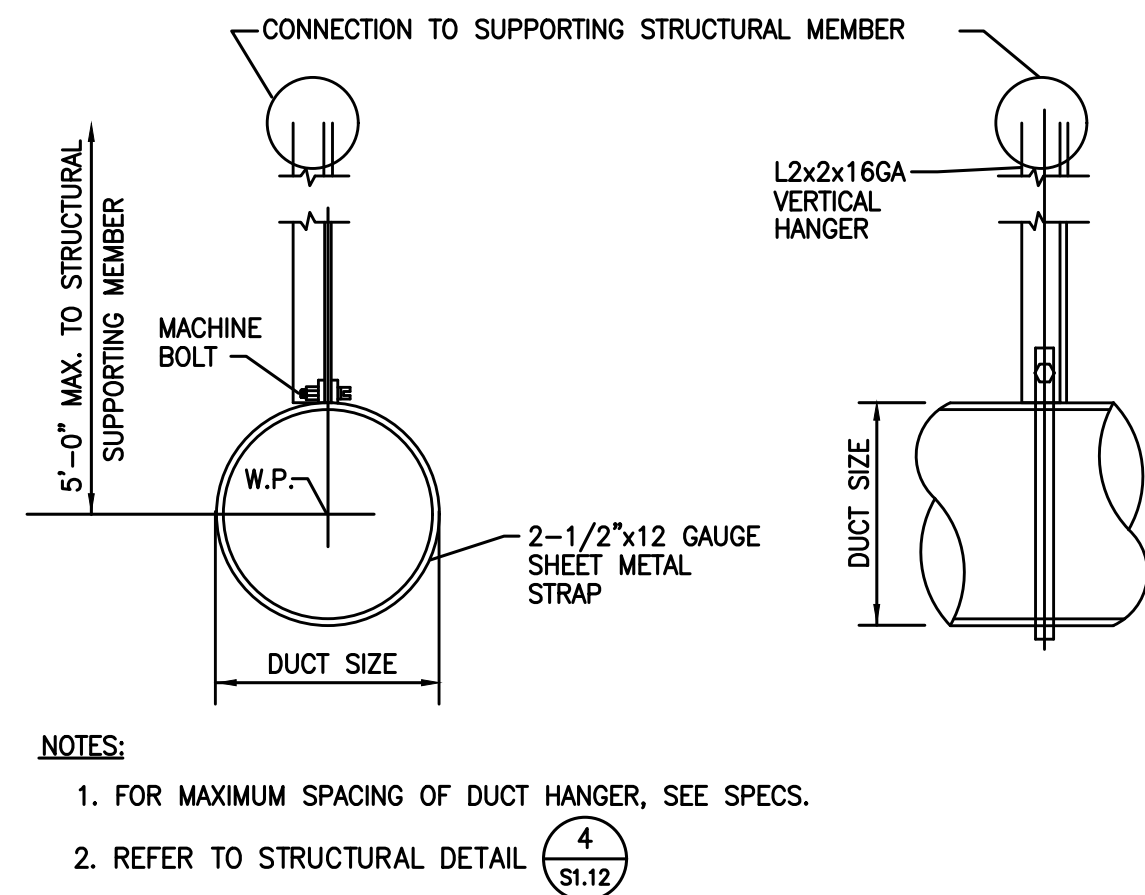
11 RECTANGULAR DUCT HANGER DETAIL
M11.01 NOT TO SCALE



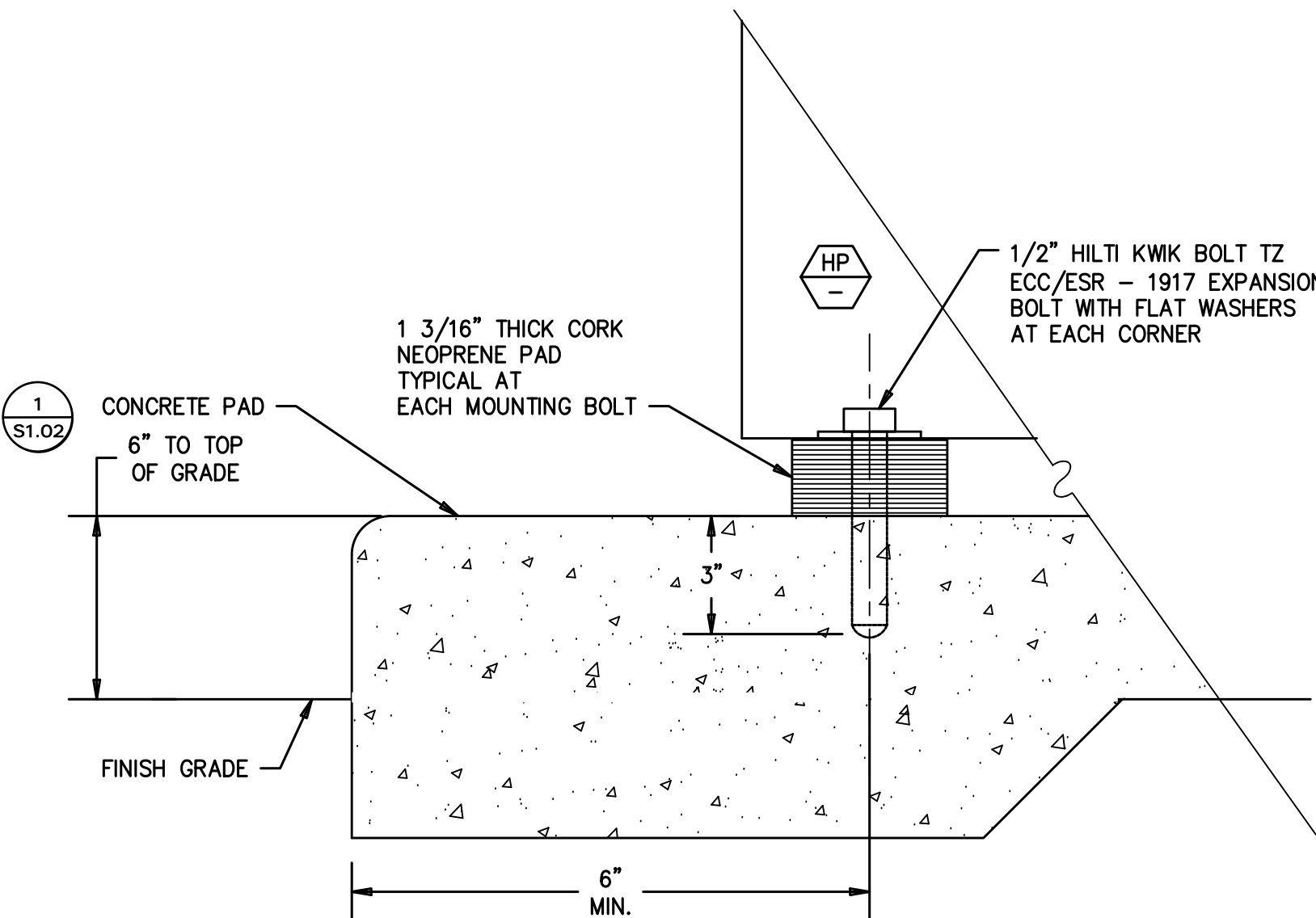
10 FAN COIL SUPPORT DETAIL
M11.01 NOT TO SCALE



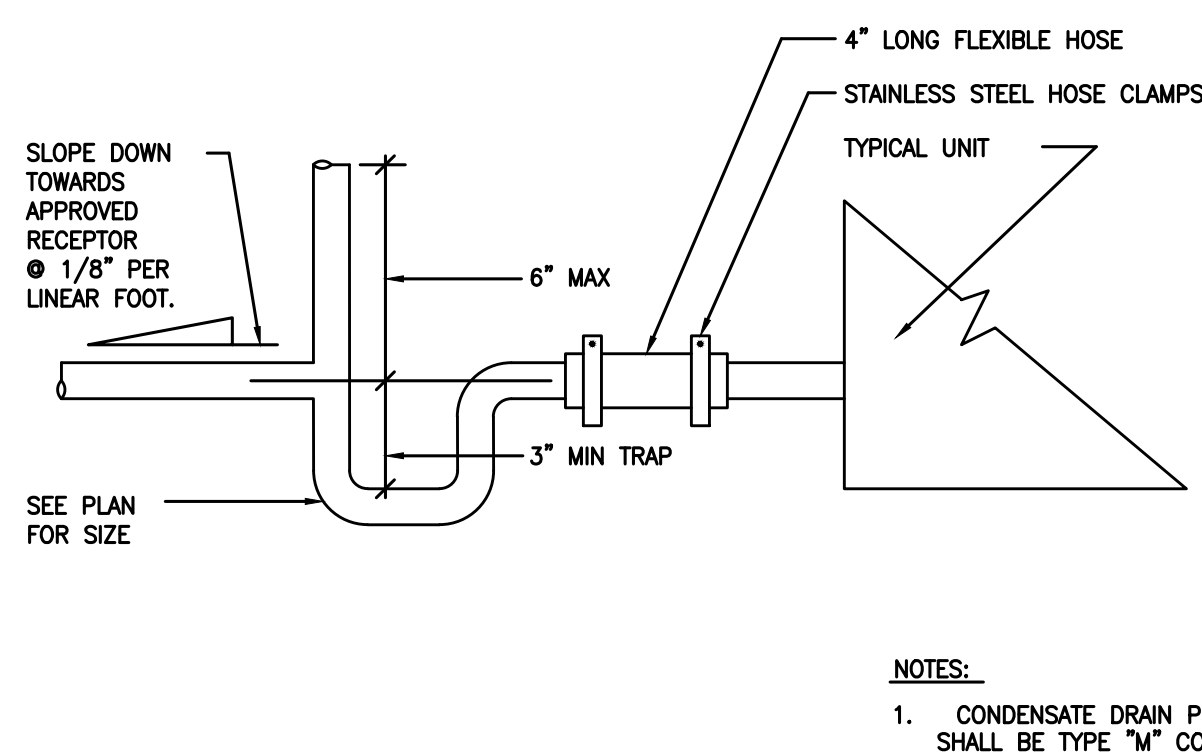
9 FLY FAN / AIR CURTAIN MOUNTING DETAIL
M11.01 NOT TO SCALE



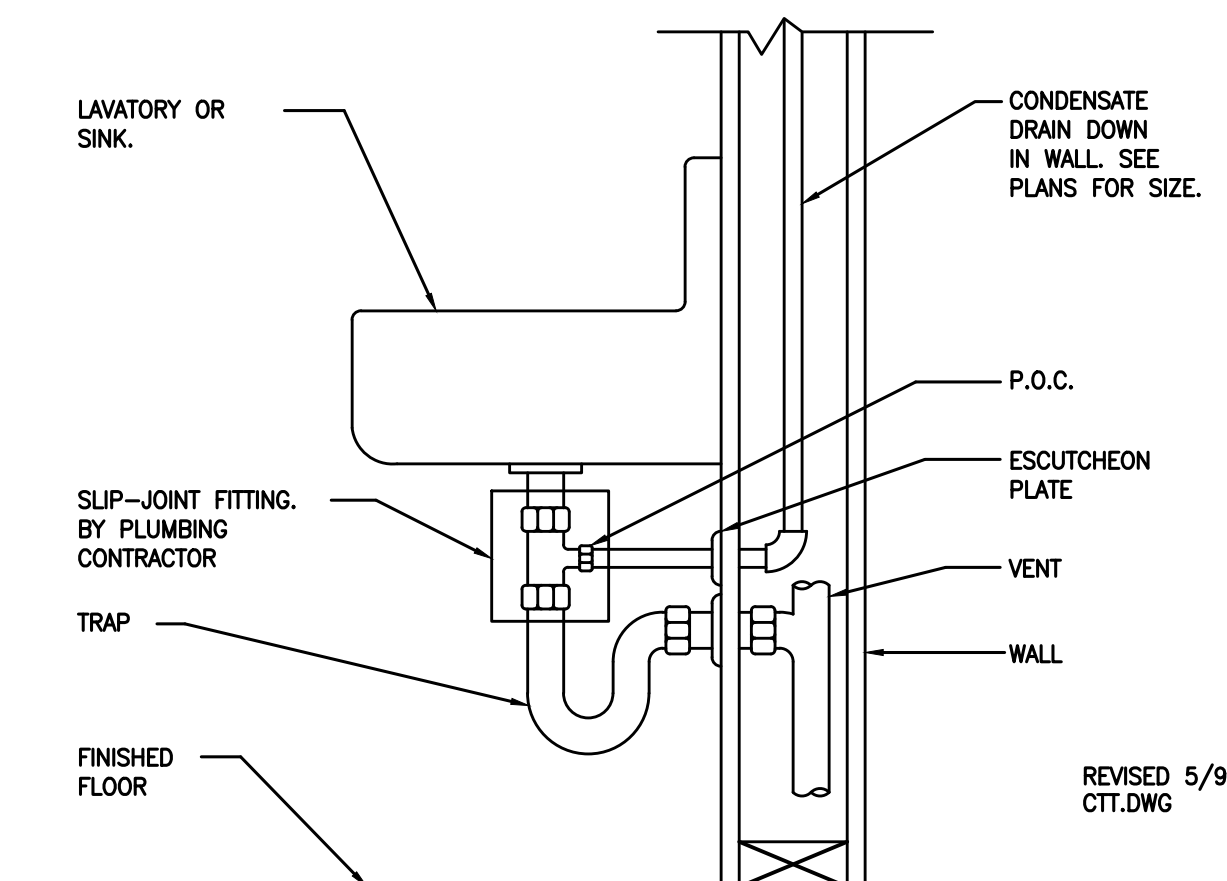
8 ROUND DUCT HANGER DETAIL
M11.01 NOT TO SCALE



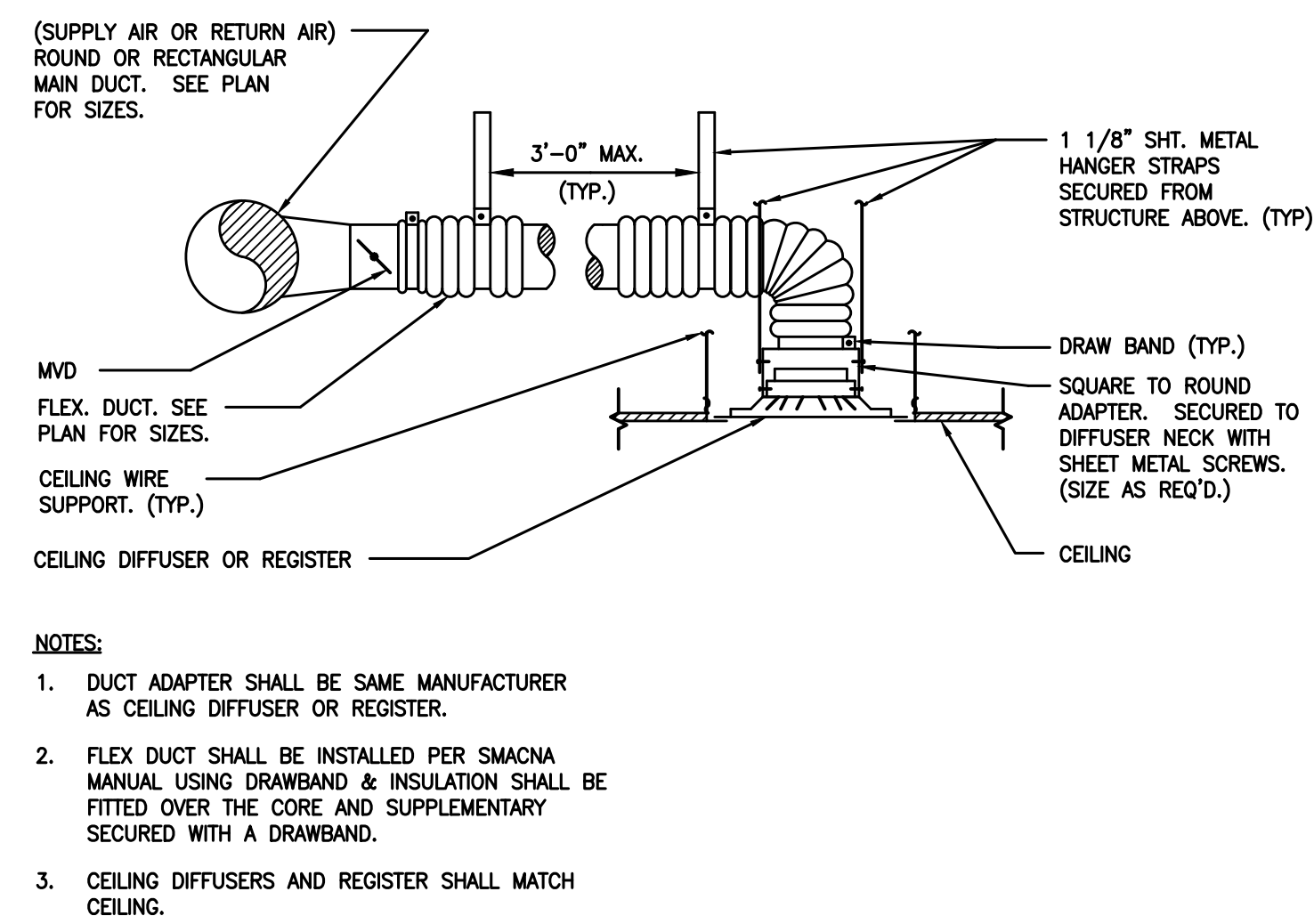
7 HEAT PUMP MOUNTING DETAIL
M11.01 NOT TO SCALE



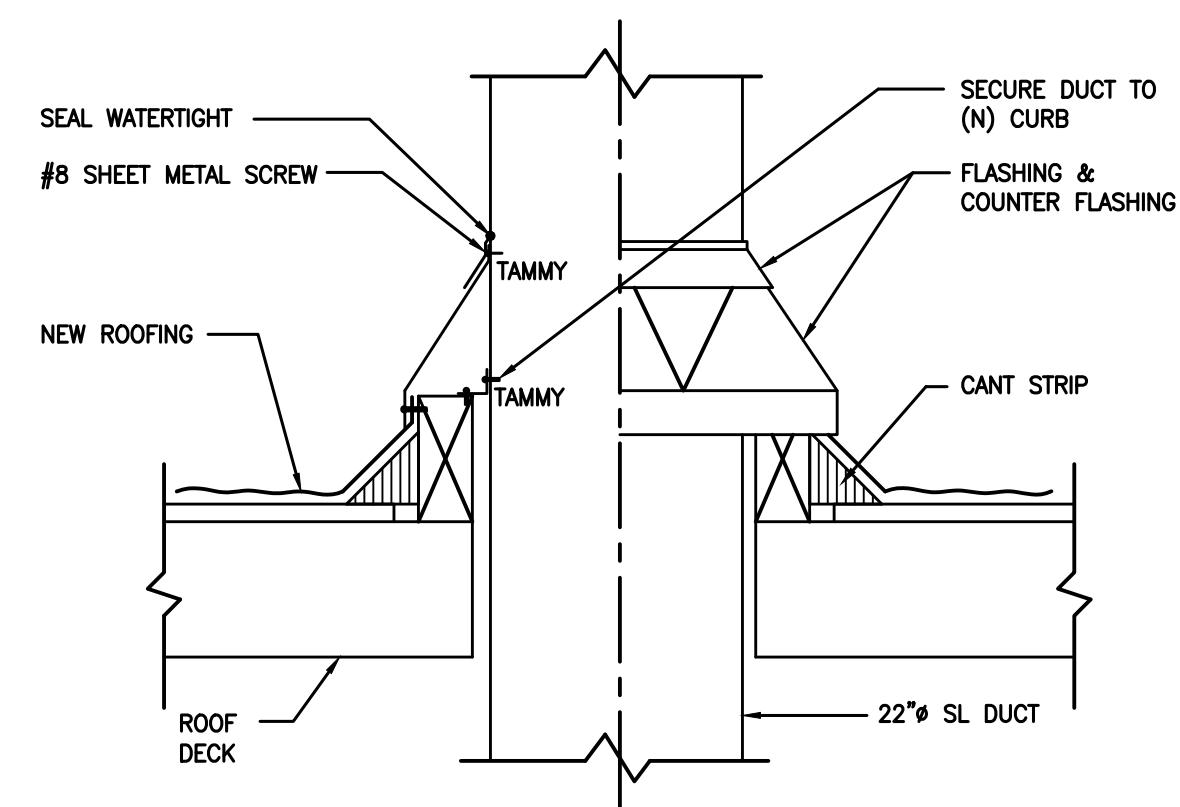
6 CONDENSATE DRAIN EQUIPMENT CONNECTION
M11.01 NOT TO SCALE



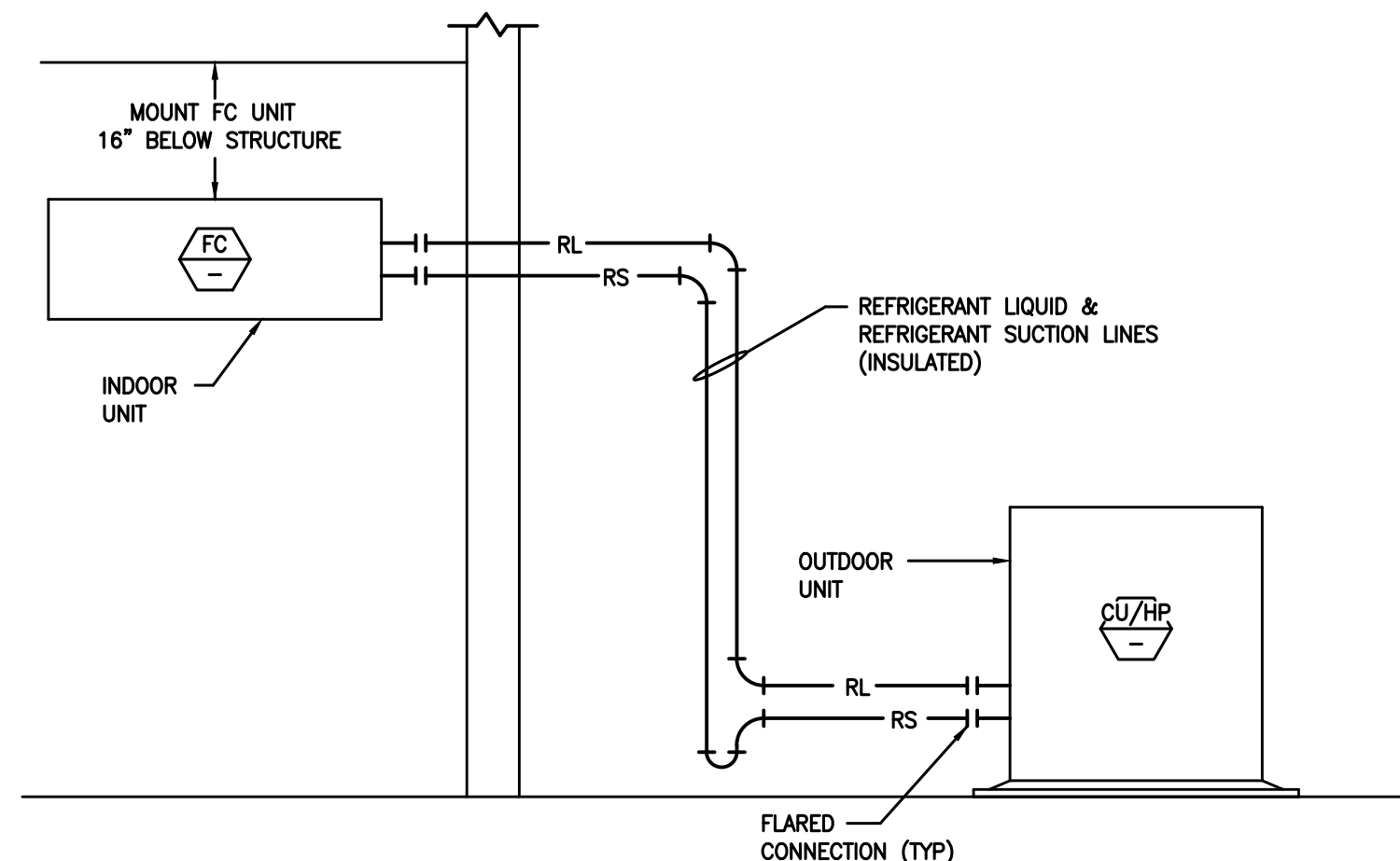
5 CONDENSATE TO TAILPIECE CONNECTION
M11.01 NOT TO SCALE



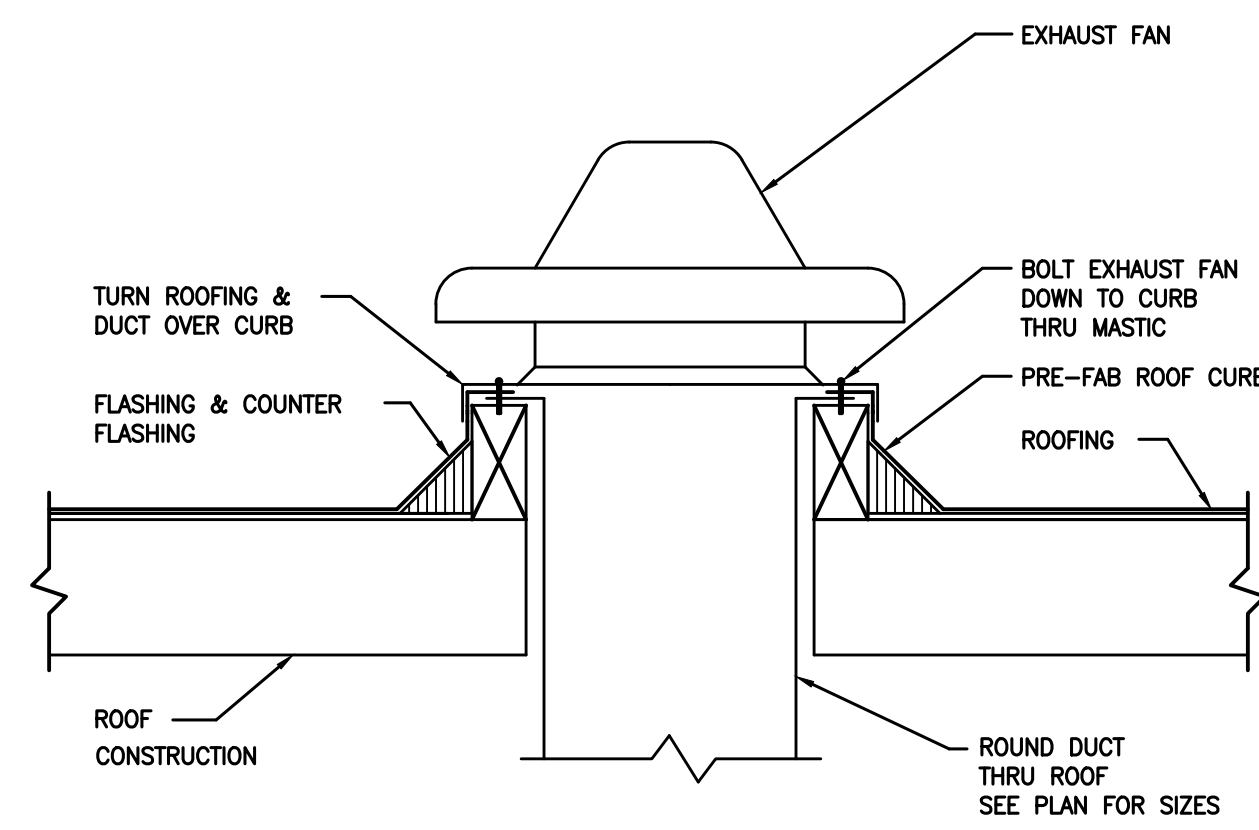
4 FLEXIBLE DUCT TO CD OR CR
M11.01 NOT TO SCALE



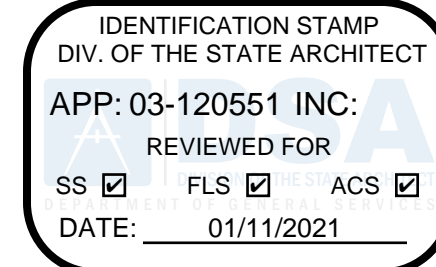
3 DUCT THRU ROOF DETAIL
M11.01 NOT TO SCALE



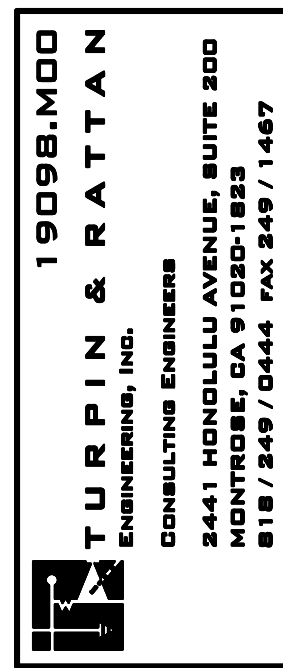
2 REFRIGERANT PIPING DIAGRAM
M11.01 NOT TO SCALE



1 ROOF MOUNTED EXHAUST FAN DETAIL
M11.01 NOT TO SCALE



REVISIONS



NORWALK LA MIRADA UNIFIED SCHOOL DISTRICT
LA MIRADA HIGH SCHOOL NEW FOOTBALL STADIUM PROJECT
13520 ADELA DRIVE, LA MIRADA, CA 90638

DSA # 03-120551

NAC ARCHITECTURE

NAC NO. 161-19015
DATE 12/10/2020

DSA BACKCHECK SUBMISSION

MECHANICAL DETAILS

M11.01